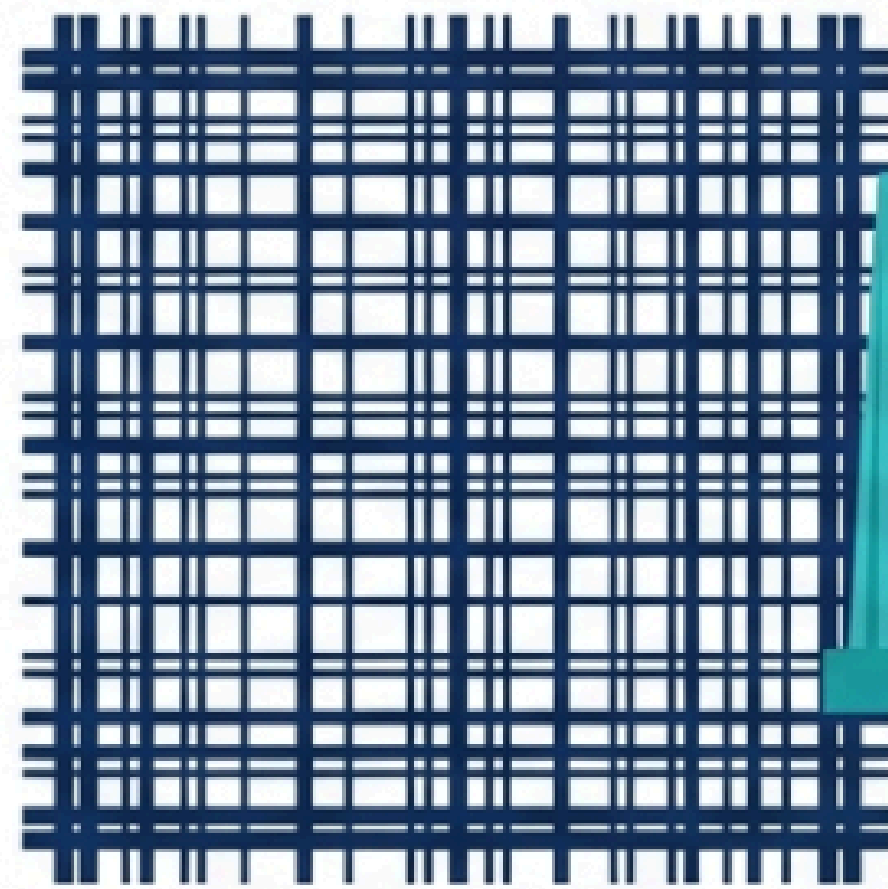


EDİP URAS

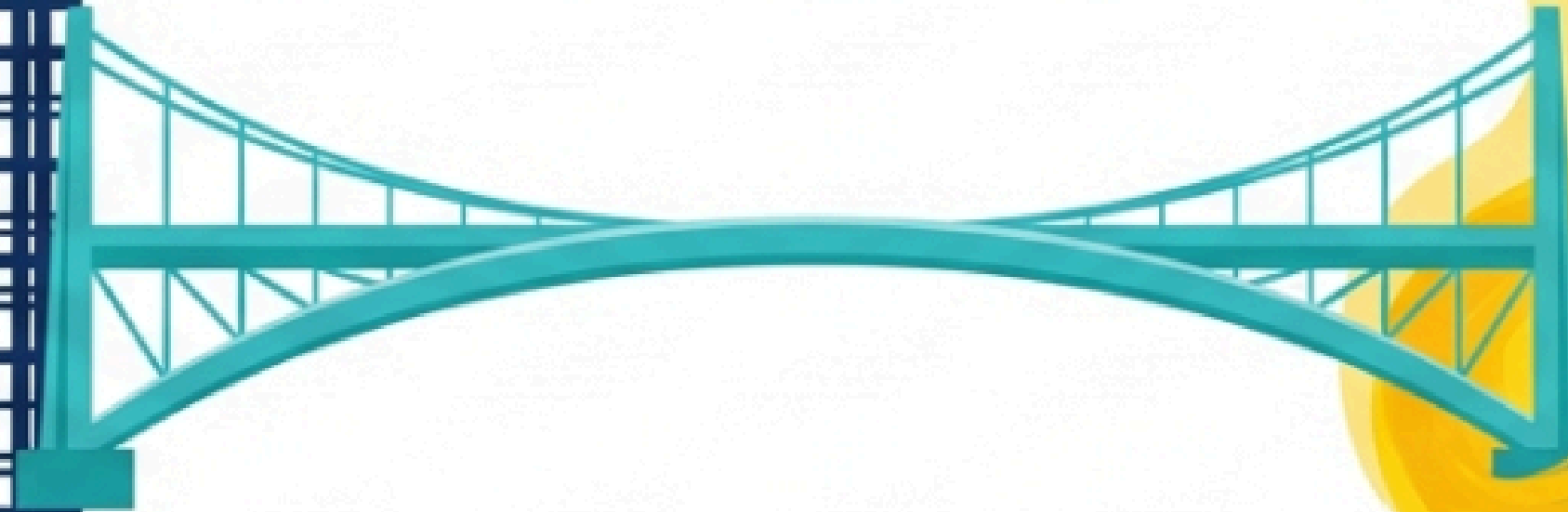
Turning Insight Into Action

Corporate Trainer
Executive Coach | Facilitator





STRATEGIC PLAN

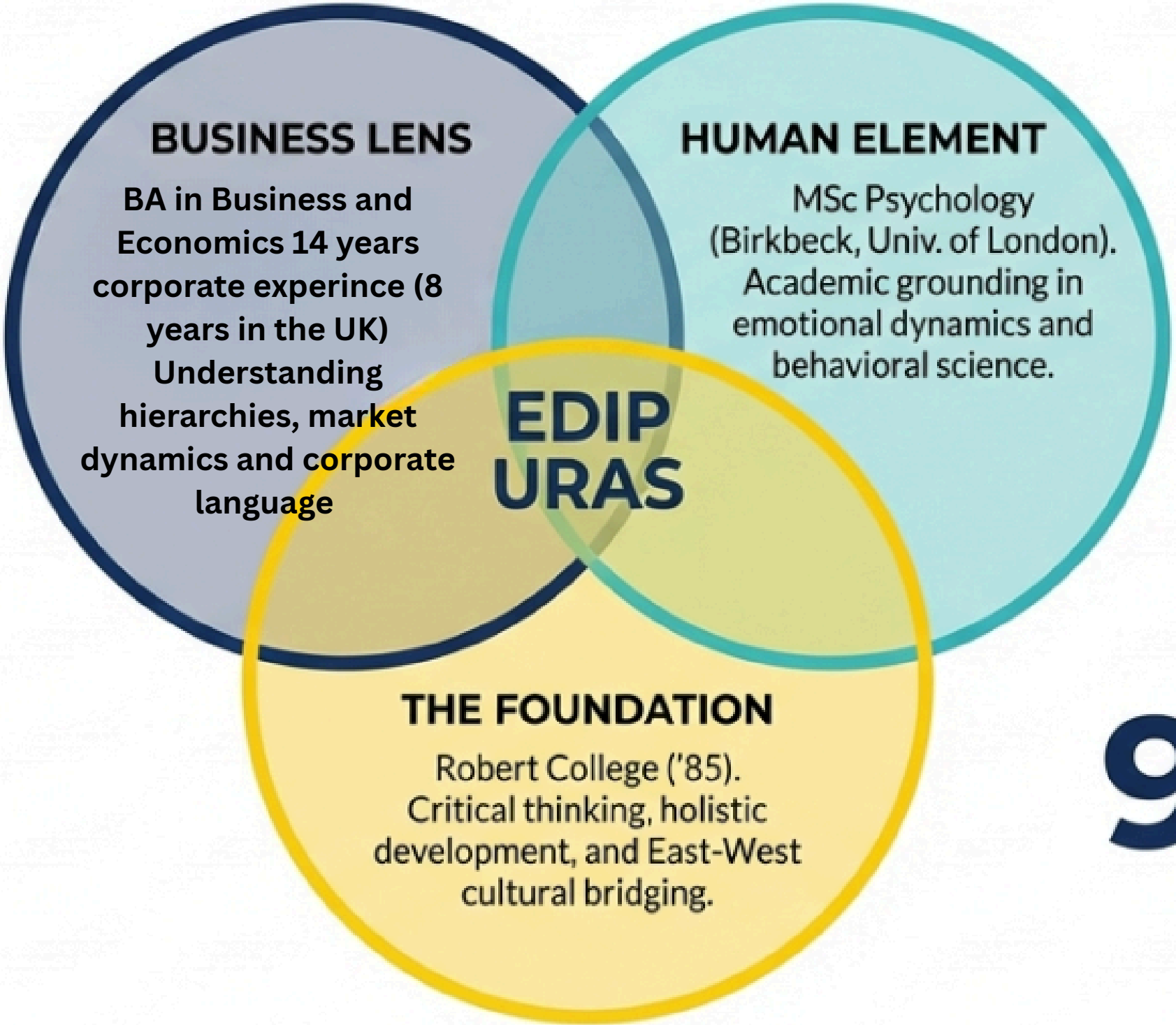
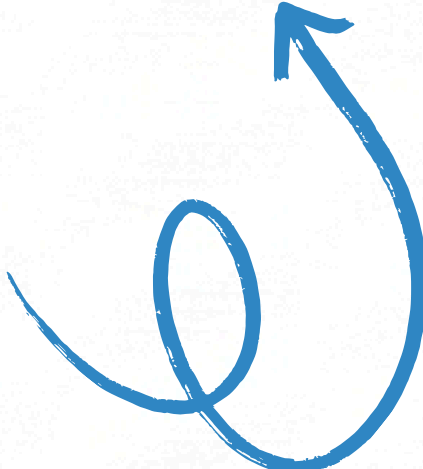


HUMAN REALITY

Organizations formulate plans, yet it is individuals who actualize and live through those plans. Comprehending human behavior is crucial for the successful implementation of strategy. In this regard, the bridge represents the link between the plan and its execution in reality.

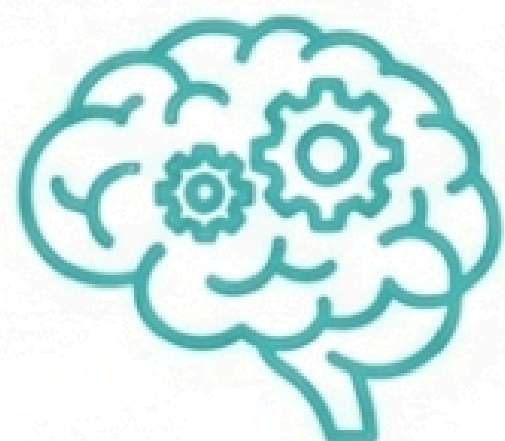
Bridging the Strategy

A UNIQUE BLEND OF BUSINESS, SCIENCE, AND CULTURE



9,000+
Hours of coaching and facilitation experience.

SCIENCE MEETS PRACTICE



PSYCHOLOGICAL DEPTH

Using NLP and behavioral psychology to address the "inner context" of resistance.



GAMIFICATION

Utilizing sports metaphors to make complex concepts accessible.



FACILITATION

Moving from didactic teaching to teams generating their own solutions.



BEHAVIORAL CHANGE

Sustainable Transformation.

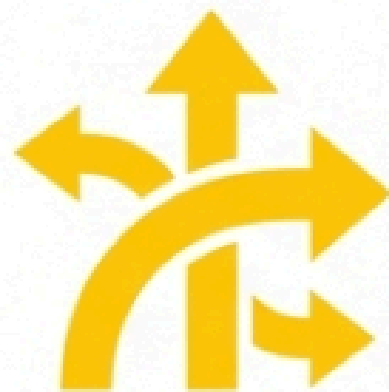


HOW I HELP ORGANIZATIONS



LEADERSHIP DEVELOPMENT

Helping leaders think clearly, make better decisions, and lead effectively under pressure.



CHANGE MANAGEMENT

Navigating resistance, building adaptability, and managing the human side of transition.



PSYCHOLOGICAL SAFETY

Creating environments where people feel safe to speak up.



CRITICAL THINKING

Recognizing assumptions, cognitive biases, and flawed thinking patterns.



EMOTIONAL AGILITY

Working with difficult emotions and maintaining flexibility under stress.



In the competitive landscape of business, understanding **your role** is crucial.

Just like in football, each position influences the outcome, emphasizing the importance of strategy and communication for success.

LIFE IS A GAME. DO YOU KNOW YOUR POSITION?



- **THE CONCEPT:** Based on the book “Futbol Terapi” and experience as Director of Scoutium.
- **THE APPLICATION:** Translating abstract corporate roles into tangible “on-the-field” positions.
- **THE GOAL:** Bridging the gap between “serious business” and “play” to lower defenses and increase learning retention.

Transforming Learning Through Action

Engaging participants in meaningful experiences is crucial for driving behavior change. By prioritizing action over passive listening, we cultivate an environment conducive to growth and lasting transformation in organizations.



Signature Programmes



1) Psychological Safety for Leaders

Build trust, speak-up culture, and team learning habits—without lowering performance standards.

2) Leading Change & Uncertainty

Help managers lead transitions with clarity, calm, and momentum—turning resistance into engagement.

3) Emotional Agility & Resilience at Work

Strengthen self-regulation, mental flexibility, and recovery skills for high-pressure environments.

4) Critical & Analytical Thinking for Decision Quality

Reduce bias, improve problem framing, and make decisions faster—with fewer blind spots.

5) Leadership Essentials (Communication, Influence, Team Dynamics)

Practical leadership behaviors that improve alignment, execution, and collaboration.



Deep
Expertise
Across
Industries

Turning Insight Into Action

TRUSTED BY GLOBAL & LOCAL LEADERS

GLOBAL GIANTS



SAMSUNG

FINANCIAL POWERHOUSES



INDUSTRY LEADERS



TOFAŞ



Evam

Partnership Note: Delivering impactful programs in partnership with Self Made Human International Academy and as an independent consultant.

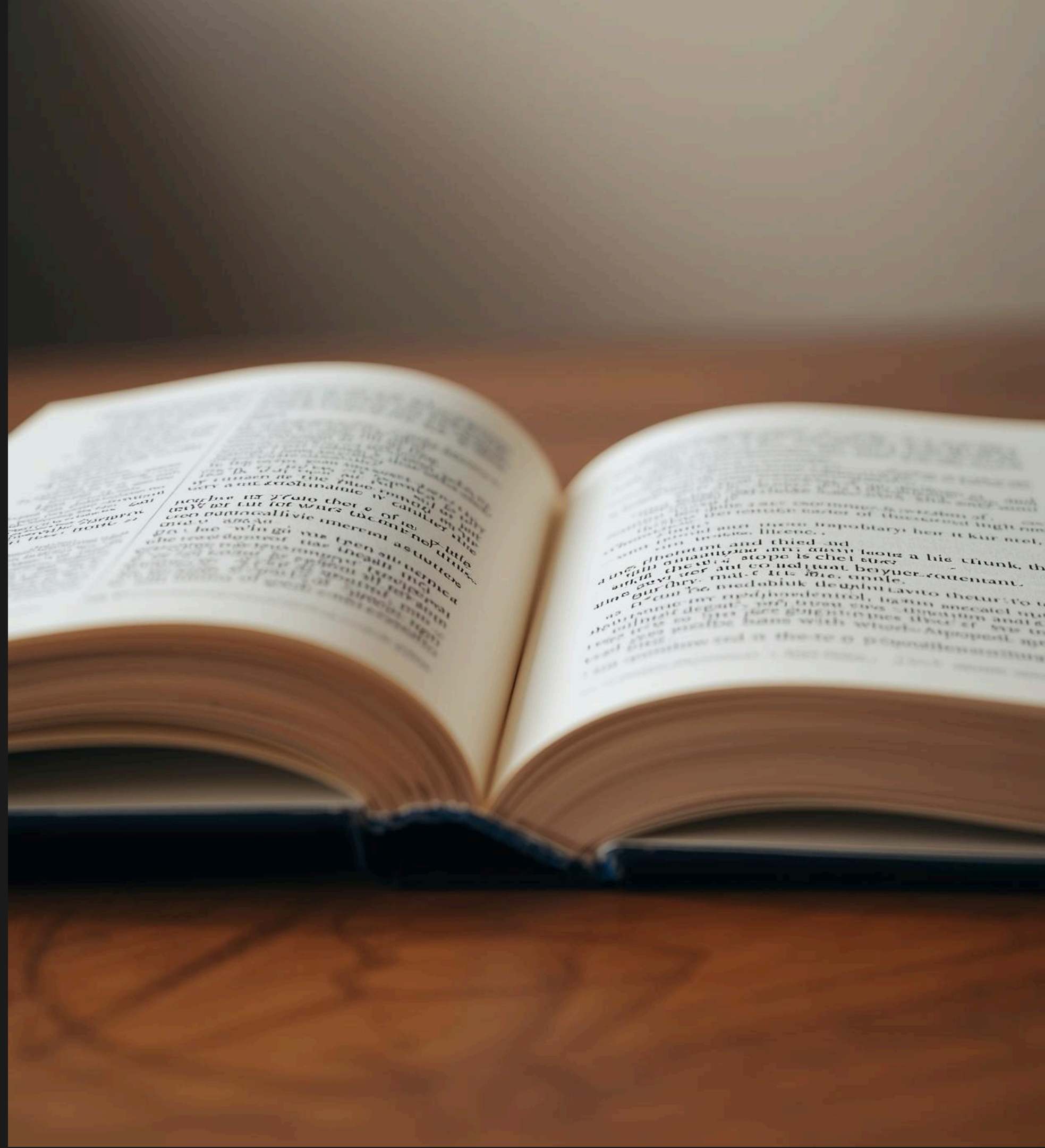
"He simplifies complex topics and ensures learning reflects in behavior."

- Client Feedback



Embracing Clarity and Honesty

Transparency is essential for achieving meaningful transformation. Organizations ready for deep engagement thrive, while those seeking simple solutions and superficial learning may struggle to realize their full potential.





LET'S TURN INSIGHT INTO ACTION.

Available for flagship leadership programs,
custom workshops, and executive coaching.

